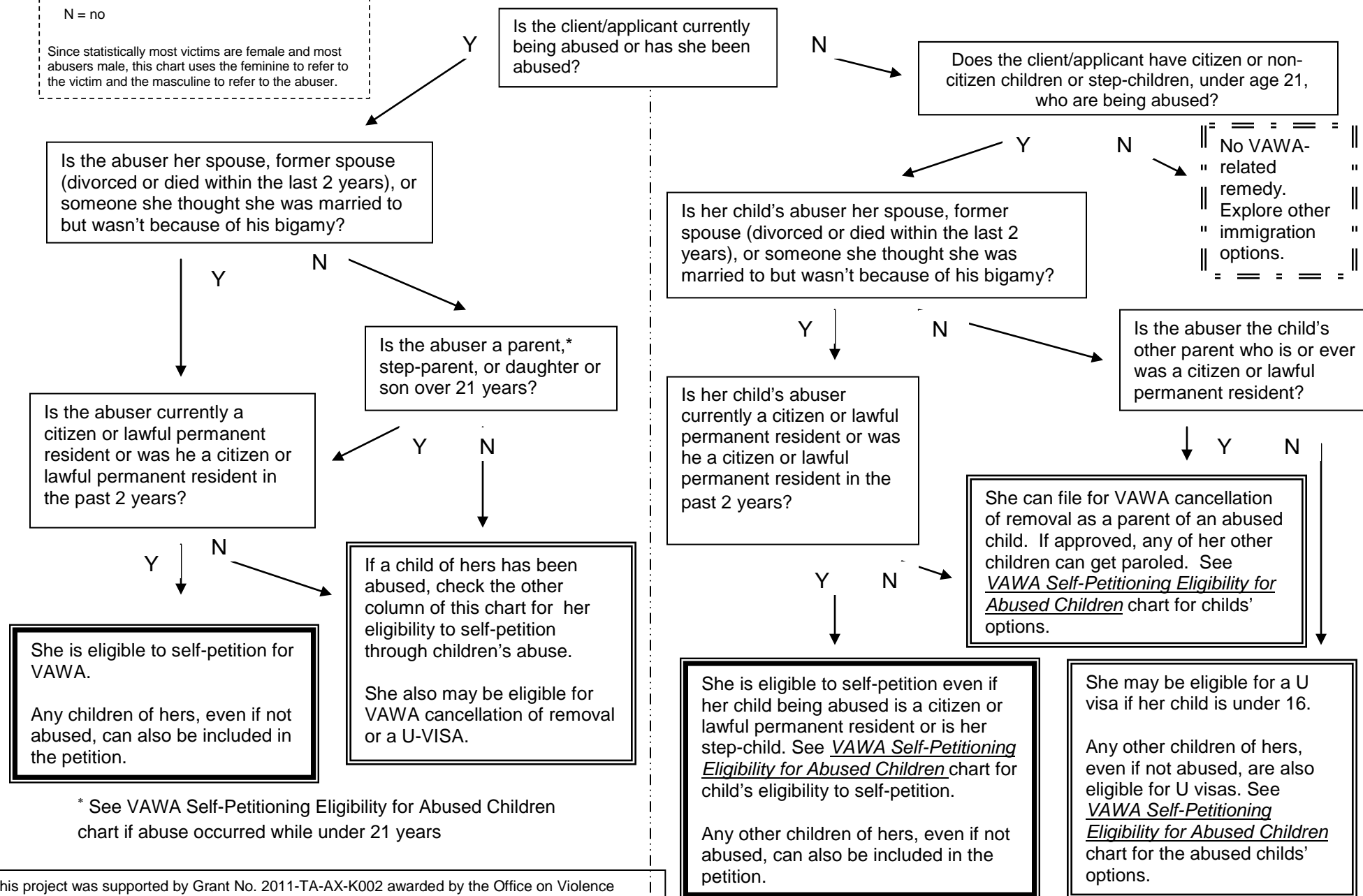


Key

Abused = battered or suffering from extreme cruelty
 Y = yes
 N = no
 Since statistically most victims are female and most abusers male, this chart uses the feminine to refer to the victim and the masculine to refer to the abuser.

VAWA Self-Petitioning Flow Chart for Adults



* See VAWA Self-Petitioning Eligibility for Abused Children chart if abuse occurred while under 21 years